



Shop Manual

May 2024

www.badgoat.net/ptcaths

President's Message

A lot has been happening around here since the last newsletter. Construction season has kicked into high gear. That and a shortage of truck drivers has kept me pretty busy hauling material around Southern Maine lately. Extra days, long days and cold/rainy days have hindered progress on some of my home projects, particularly old truck therapy sessions. But progress (slow as it may be) is continuing to be made.

Unfortunately, Nancy and I were both sick and unable to attend the Spring Stretch at the Cole Land Transportation Museum a couple of weeks ago. Based on all accounts from those that attended that I have spoken to, and from social media posts, the event was well attended by our members, and they brought a good number of trucks to Bangor as well.

As I am writing on Saturday evening whereas the Bonney Eagle Car Show is on Sunday morning – May 19th. I am planning to make the short trip to Buxton (as a spectator) for a couple of hours followed by a regional Retired Fire Fighter's gathering.

Next weekend is Memorial Day Weekend so there should be a parade or two in your area to take an old truck to. And while you are relaxing, watching your choice of auto races (Monaco, Indy, Charlotte 600), please keep in your thoughts the members of the military, fire fighters, law enforcement and emergency medical service members that have given their lives for our safety and to protect our nation so that we can go out and play with old trucks and bitch about the politicians (all of them).

The month of June really kicks old truck season into high gear this year. The ATHS National Convention and Truck Show June 6-8 in York, PA is followed the next weekend by the ATCA National Show just up the road in Macungie, PA June 14-15. For those not going to Macungie, there's Watson's Water & Wheels on Father's Day (June 16) on the shores of Brandy Pond in Naples, Maine. And last, but definitely not least, is that truck show up in northern Maine where they raffle off an old truck (or two) for good causes. This year's Springtime Truck and Tractor Show is on June 22nd at Sibley Transportation on Odin Rd. In Bangor, Maine.

After all of that you might get a brief rest, and then it's off to Owls Head, New Hampshire Show, Green Mountain Chapter Show, various Massachusetts truck shows, small local shows and cruise nights and then our own Topsham Truck Show in September. Wow, it's going to be a crazy summer! Hope to see you out there at a show. Maybe tomorrow at Bonney Eagle or in York in a few weeks. Remember "Old trucks are fun." *Peter*

Ramblings by Lars Ohman

Oh, how the times have changed. Back in the early 1960's, I was still in the Coast Guard and would have 14 days off every 28 days at sea. I would pick up work from local contractors who needed a hired wrench, driver, or lumper. Charles J. Precourt, and Son in Sudbury was one of these outfits. I had turned wrenches and rebuilt (a basket case) forklift from a parts book. You can see it in the loading shot of the T1-11 plywood. Other chores came up, and one of them was hauling lumber from the B & M Siding in Sudbury to the Stanmar Lumber Co, also in Sudbury.

The B & M (Broken & Maimed Railroad) siding was shared by Precourt, Stanmar, and another outfit, so space and a pecking order was a weekly occurrence. Lumber came in by rail, mostly in double door box cars, and was unloaded by a specialized crew. When it landed on the ground, Precourt had the contract to haul it to Stanmar's operation some two miles down Rt 20. Everything in the railyard was always RUSH to get lumber out of the way of Precourt's stone, or railcars of machinery.

One day a railcar of T1-11 Plywood came in and the unloading crew had part of it on the ground when we arrived @ 0630. We had Precourt's B-61 single axle tractor and a fairly new Fruehauf 42' tandem trailer... Rush, rush, rush, "get that plywood loaded and get out of here, we need the space." (The Late) Frankie Silva and I started loading the trailer, and all was going well despite the back up of lifts on the ground waiting to clear the yard. We were both young, foolish, and not educated in "legal" loading, so "if it fits, ship it!" We wound up with 50 lifts of the T1-11 on the trailer! We had to double chain it on as we did not have chains long enough to reach over the load.



Simple math: 50 lifts of plywood @ 2400 LBS per lift = 120,000 LBS!...just for the load. We got it loaded, came out of the B & M siding, over the NY-NH & H tracks, and onto Route 20 via Union Ave. (We could not make the swing onto Station Road). We made it to Stanmar with the full rail car load! (we unfortunately took down a half dozen or so telephone lines that hung a little low.) The Stanmar crew was amazed they got the load the same day it was unloaded from the rail car. Time went on, Mr Precourt (Jr.) rearranged our posteriors in a complete dissertation of "How not to do it...". Next load a few weeks later, we did another load, but left the top 10 lifts off, and lowered the load to 96,000 LBS!

The second photos of the F-750 six wheeler with the dimension roof supports was another example of “get it hauled before it rains,,,that stuff is inside trusses for Stanmar’s famous “A” frame houses that were quite popular at the time, and could not have water stains on them. This time, the trailer was not available, and rain was due in anytime, so Frankie, and I once again, without young Charlie’s permission or guidance, took it upon ourselves to do what we thought was the right thing under the circumstances.

The truck body was 20 feet, the bottom lifts were 28-foot special order timbers, and you see how we had to load the uppers so as to keep the front wheels on the ground! We got it there without a drop of rain on it, and the balance of the railcar remained in the car thru the storm, and was hauled the next day.....on the trailer that time!



We see overloads up on the Golden Road, or other “off road” hauls of massive double and triple trailers...good place for them. Having the opportunity of working with Gushee Rigging and Heavy Hauling gave me the opportunity to see how much work goes into an over dimension, or overload. From pre-trip planning, to permit chasing, to securing the load on many multi axle trailers with dollies and stingers to spread the weight for bridge restrictions. Then add in the State Police, local Police, and Sherriff Departments to escort the load is mind boggling. We were just a couple of kids trying to get the job done and give a good day’s work for a day’s pay. I’m not really proud of these jobs today....but then, some 52 years ago, long before “GET-ER-DONE” was a catch phrase, that’s just what we did....See’ ya, just ‘chuggin on down the road.....Legally, well, almost, most of the time. . . . *Lars*

Photos credit go to Sam Sicchio for saving my slides and putting them on discs so we can all see them.

WATSON’S WHEELS & WATER SHOW will officially be hosted on Father’s Day Sunday to honor the memory of Dana Watson. The “official” one day event is also open to those that will be arriving from some distance, and wish to arrive on Saturday, and camp out. Sunday’s events will remain just as an open invitation “run what you brung” and share a burger or hot dog for an informal lunch. If you happen to have a satchel of cookies, or whoopie pies, even a bag of chips, all will be welcome at the food table. Beverage of choice, as per usual, will be your choice. A ceremonial green bottle of Rolling Rock will be toasted at noon in honor of Dana. Just a good ‘ol laid back gathering of stories and memories to be shared by all. Any questions, Cole Watson can be reached @ (207) 318-8303.....Watson’s Lakeside Compound, on Brandy Pond in Naples, is off Rt 114 on State Park Road on the left headed toward Sebago Lake Campground...usually well marked...hope to see you there..... *Lars*

I should have known better..... by Doug Wakefield

As most of you know I, along with a few others, operate an annual charity truck show.....The Springtime Truck and Tractor Show. We are self-funded by having an antique truck drawing that people from all over North America enter by making a \$100.00 entry donation.

Most of the time I deal with Brayden Tucker, the owner of Tucker Equipment and Dying Breed Diesels in Lisbon, Ohio. But once in a while I will find an old truck locally that catches my attention. Such was the case late last fall, when a local gentleman was selling a 1962 Mercury M-700 and I told myself that you don't see many Mercury trucks anymore and I'll bet that truck would get a lot of attention.



Well, I was right about that part of the plan. The truck ran great, yard drove ok and I decided that we should do another two truck drawing this year. Very shortly after I bought the truck, the previous owner passed away unexpectedly, but his son promised me that he would deliver the truck to me as soon as he could. A couple of weeks later he did just that. As it was almost Thanksgiving, I just parked it out back for the winter. As I said, I was right, the Mercury got a lot of attention, even more then our 85 White diesel Road tractor. Everyone wants the red Mercury.

Fast forward to a couple of weeks ago, I had gotten caught up on spring chores so I got the old truck running and moved it up to the garage, problem #1 quickly developed, not a sign of brakes, I should have known better. Oh well, I've got a little time, maybe if I fill the master cylinder it will self-bleed, well I should have known better. I'll crawl under it and bleed the system. How come the battery is flat?

My best guess is the old girl ain't charging, that's right, I should have known better. Gave it a boost, started and run like a new one, crawl back under to Crack the bleeder screws and found that I'm the only damn fool to TRY to loosen them in I would guess 40 to 50 years. Well let's try the other side. No luck there either. As I lay there mumbling a few choice words, I noticed that the saddle under the housing on the right side had rusted completely in two between the U bolts. Oh my, I should have known better.

This morning I very slowly and carefully loaded the Mercury onto my trailer. Yes it will be drawn off and given away at our show along with a 500 dollar check to help the winner make the needed repairs to it. As I still work full-time, I just don't have the time to make the necessary repairs before the show. The old truck runs good and looks pretty good also, but will need a little TLC before the winner can join the parade circuit.



I feel bad, because so many people would like to win this truck, and someone will, but I want to apologize for the need to have repairs made. Truth of the Matter is, I SHOULD HAVE KNOWN BETTER.

Hope to see you all at the show Saturday June 22,2024 at Sibley Transportation Truck Shop 977 Odlin Road in Bangor, Maine. I guess I'd better see if I can get the White started! *Doug*

VOLUNTEERS NEEDED AT THE NATIONAL CONVENTION & TRUCK SHOW

Volunteers are needed to make the National Convention & Truck Show successful. If you plan to be with us in York, please consider giving a little of your time. One 3-hour shift makes a big difference! Positions are open in truck parking, traffic control, unloading, gate sales, truck registration, hospitality, ATHS terminal, and photo. To show a token of our gratitude, ATHS provides a \$10 voucher for the ATHS Gift Shop! Contact Brad Patterson with questions (Brad@aths.org or 816-777-0691).

2025 Antique Truck Calendar by Thomas Hudgins

Truck show season is upon us and this year, the chapter is reviving our antique truck calendar. I have started collecting imagery from members and looking in my archive for photos from previous shows. Any chapter member regardless of location is encouraged to submit photos or coordinate with me for a photo shoot at a truck show. I will be taking photos at the York ATHS National Convention/Truck Show. I have spoken to a few members who are taking their trucks to Pennsylvania and plan to capture their old iron representing us amongst the old truck nuts. I live in the Bangor area and will be attending the Springtime Truck and Tractor Show next month too.

The class of 1999 enters the antique world for the year 2025. Any truck older than 25 years old is considered an antique and welcome to be included in the calendar. The old iron doesn't need to be shiny or fully restored to be featured for a particular month. It can be museum quality, barn fresh, a work in progress or still used for business. All sizes of trucks will be considered. Also, if anyone has pictures from last summer's Owls Head show or our September Topsham show, please submit them for the calendar. I can travel on weekends to photograph trucks if needed or I can capture your truck at an event or show. As always, if a chapter member goes to old truck heaven, send me a truck photo and his/her name. You can submit images via email: tomchristopher28@gmail.com or through snail mail. My physical address is P.O Box 43 Bradford, ME 04410. If you want your photos returned please provide a SASE. I can be reached via cell phone at 207-943-6548 for those of you who are hip with the world of smartphones. *Tom*



Shown are the N361T and K360TL models of the Brockway 360/361 Series – Vintage 1969-72

The 360 and 361 Series Brockways appear to be the top-of-the-line conventional models offered in the early-seventies. Other Brockway models offered o this period included the 527 series Huskiteer low cab forward trucks and tractors, the 358 and 359 series trucks and tractors with 90-inch BBC dimension; and the 457 and 459 series COE trucks and tractors. The brochures were acquired as part of a duplicate literature swap last year.

The 360-361 models are coded as follows:

1 st letter denotes engine code	E: Detroit 6-71N; K: Detroit 8V-7; N: Cummins NH230 or Super 250;V: Cummins V-903
2 nd – 4 th numbers denote series	360 – set forward axle truck or tractor; 361 – single back axle truck or tractor
5 th letter denotes truck usage	L – cargo truck; T – truck tractor
6 th letter denotes rear axles	no 6 th letter – single axle; L – tandem axle

I acquired the brochures of the 360-361 Series models listed below:

K360TL – tandem axle 160” wheelbase truck tractor with Detroit 8V-71N diesel; Fuller RTF910 10 speed transmission; and Timken SLHD single speed 34,000 lb. tandem rear axle with 4.11 gear ratio.

N360TL – tandem axle 160” wheelbase truck tractor with Cummins Super 250 diesel; Fuller RTF910 10 speed transmission; and Timken SLHD single speed 34,000 lb. tandem rear axle with 4.11 gear ratio.

V360TL – tandem axle 160” wheelbase truck tractor with Cummins V-903 diesel; Fuller RTF910 10 speed transmission; and Timken SLHD single speed 34,000 lb. tandem rear axle with 4.11 gear ratio.

E361L – single axle 190” wheelbase cargo truck with Detroit 6-71N diesel; Fuller T905C 5 speed transmission; and Eaton 19220 two-speed 23,000 lb. rear axle with 4.11/5.60 gear ratios.

E361T – single axle 148” wheelbase truck tractor with Detroit 6-71N diesel; Fuller T905C 5 speed transmission; and Eaton 19220 two-speed 23,000 lb. rear axle with 4.11/5.60 gear ratios.

E361TL – tandem axle 148” wheelbase truck tractor with Detroit 6-71N diesel; Fuller RTF910 10 speed transmission; and Timken SLHD single speed 34,000 lb. tandem rear axle with 4.11 gear ratio.

K361T – single axle 148” wheelbase truck tractor with Detroit 8V-71N diesel; Fuller T905C 5 speed transmission; and Eaton 19220 two-speed 23,000 lb. rear axle with 4.11/5.60 gear ratios.

N361L – single axle 148” wheelbase truck tractor with Cummins NH230 diesel; Fuller T905C 5 speed transmission; and Eaton 19220 two-speed 23,000 lb. rear axle with 4.11/5.60 gear ratios.

V361T – single axle 148” wheelbase truck tractor with Cummins V-903 diesel; Fuller T905C 5 speed transmission; and Eaton 19220 two-speed 23,000 lb. rear axle with 4.88/6.64 gear ratios.

V361TL – tandem axle 148” wheelbase truck tractor with Cummins V-903 diesel; Fuller RTF910 10 speed transmission; and Timken SLHD single speed 34,000 lb. tandem rear axle with 4.88 gear ratio.

It appears there were likely other models in the 360 – 361 Series whereas not all engines are show as single axle tractors (T), tandem axle tractors (TL), single axle cargo trucks (L), and no tandem axle cargo trucks (LL) were in the collection.

The individual who provided me the brochures, Dave Mueller, will be giving a talk on Brockways at the ATHS Convention in York on Thursday, June 6th. It should be an interesting presentation. *Clayton*

Local and Regional Events

Saturday	5/25/24	4 th Annual Coastal Cruise in and Fun Day @ Wiscasset Speedway 10-3 FMI go to wiscassettspeedway.com
Sunday	6/2/24	Ocean State Vintage Haulers – ATHS 30 th Annual Antique Truck Show; Johnston Memorial Park, Johnston, RI
Thurs – Sat	6/6-8/24	ATHS National Convention and Truck Show – York, PA
Fri-Sunday	6/7-9/24	Squarebodies of Maine Mud Bowl – Spud Speedway, Caribou, ME
Sat- Sunday	6/8-9/24	ATCA CT Yankee Chapter Show; Bethlehem Fairgrounds, Bethlehem, CT
Sunday	6/9/24	ATHS/ ATCA Convoy to Macungie, PA
Thurs-Sat	6/13-15/24	ATCA 44 th Annual Truck Show & Flea Market – Macungie, PA
Sunday	6/16/24	Watson’s Water and Wheels, Naples, Maine – see Ramblings FMI
Saturday	6/22/24	Springtime Truck and Tractor Show – Sibley Transportation Truck Shop, 977 Odlin Rd. Bangor, ME. Entrance across from Lee’s Concrete.
Sunday	6/23/24	Nutmeg Chapter - ATHS Annual Show - Brooklyn, CT
Sunday	6/23/24	Long Island Chapter - ATHS Summer 2024 Truck Fest, Manorville, NY
Thurs-Sat	7/11-13/24	45 th Walcott Jamboree – Iowa 80 Truck Stop - Walcott, Iowa
Saturday	7/13/24	12 th Annual International Motor Truck Gathering – ATCA – Muncy, PA
Saturday	7/13/24	Squarebodies of Maine 3 rd Annual ALL Truck Show - O’Connor GMC, Augusta, ME
Saturday	7/13/24	Boothbay Railway Museum Antique Auto Day
Sat-Sunday	7/13-14/24	Long Island Chapter - ATHS 22 nd Annual Antique, Classic & Working Truck Show, LIAPA Showgrounds, Riverhead, NY
Fri-Sat	7/19-20/24	7 th Annual Gear Jammer Magazine Truck Show – Epping, NH
Saturday	7/20/24	45 th Annual Founder’s Day & Classic Car Exhibit – Bahre Collection, S. Paris, ME To benefit the Hamlin Memorial Library (207-743-2980 / www.hamlin.lib.me.us)
Sat-Sunday	7/20-21/24	Pine Tree Chapter – ATHS Gathering at the OHTM Truck & Tractor Show
Fri-Sunday	8/2-4/24	Northeast Rockbusters Antique Construction Equipment Show, Concord Sand and Gravel Pit / Continental Paving, Concord NH

Saturday	8/3/24	Green Mtn Chapter – ATHS Truck Show – Food on site!! Second year at Connecticut Valley Auto Auction site - 1567 VT RT 14, White River Junction, VT
Fri-Sunday	8/7-10/24	HCEA International Convention and Old Equipment Exposition, at the New York Steam Engine Association's Pageant of Steam, Canandaigua, NY
Sat-Sunday	8/17-18/24	Granite State Chapter – ATCA Annual Truck Show – Location TBD
Weds-Sat	8/21-24/24	44 th Annual New England Auto Auction Week – Owls Head Transportation Museum, Owls Head, ME
Sat-Sunday	8/24-25/24	Bay State Chapter – ATCA 22 nd Annual Truck Show, Bolton Fairgrounds, Lancaster, MA
Sat-Sunday	8/24-25/24	Upper Canada Chapter – ATCA 8 th Annual Athens Truck Show, Athens Fairgrounds, Athens Ontario
Fri-Sun	9/6-8/24	Squarebodies of Maine 4th Annual Shin Pond Squarebody Rally, Shin Pond, ME
Saturday	9/14/24	Mainely Money Pits FB Group 3rd Annual Touch A Truck Event 11-2 Balsam Cove Campground, 286 Back Ridge Rd., Orland, Maine For more information contact Rich Thompson muddin4fun87@gmail.com
Mon-Fri	10/7-11/24	AACA Eastern Fall Meet - Hershey, PA
Sunday	10/13/24	Ty Rods Fall Swap Meet Stafford Springs Ct
Thurs – Sat	6/5-7/25	ATHS National Convention and Truck Show – Madison, WI

Classified Ads

Classified ads may be sent or called in anytime. They will generally be run twice unless the ad is pulled by the submitter. An ad will be run additional issues at the submitters request.

For Sale: 1988 GMC Brigadier 16-foot flatbed with 250 hp 3208 CAT, five-speed transmission, and two-speed rear axle; former fire truck 31,000 miles, like new condition. Needs to go – Make me an offer. Contact Bob Dore 207-242-8751

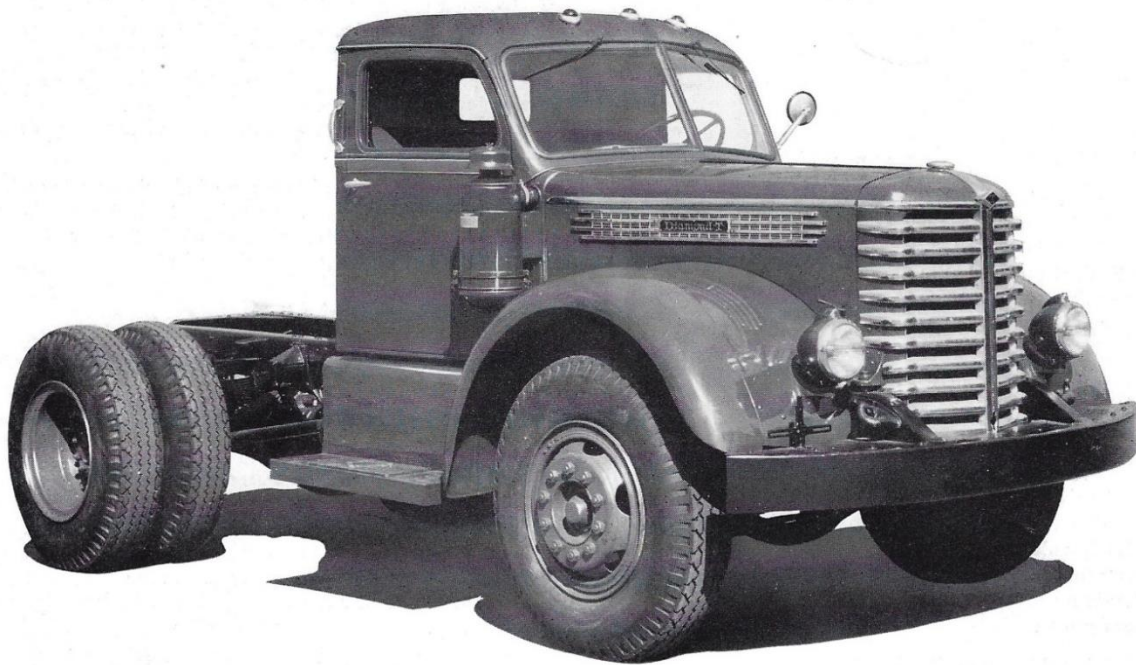
Wanted: 5th wheel setup for a single axle truck. **Also Wanted:** 5th wheel setup for a tandem axle truck.
For Sale: 1951 GMC 640 4-71 Detroit, 5&2 body in good shape and restoration started. Some assembly required. \$3500 OBO. Delivery available. Jamie 207-949-1360

Wanted: One Bostrom Viking T Bar seat in good condition or a pair of low mount air-ride seats in good condition for 1957 GMC 630 project. What might you have? **For Sale:** ten 8.25 – 22.5 budd rims in varying condition – gathered from several sources for 57 GMC project; changed plans. Make an offer per wheel or for the lot. Wheel sales monies will be donated to the Chapter. Contact Clayton Hoak at 207-582-3224 or 1948reo@roadrunner.com.

For Sale: 1946 CAT D-7 cable blade bulldozer with good feet and double winch on rear. \$3999 or BRO. Unit is in Raymond, ME. Call 207-949-7116 or email LCWillis7116@gmail.com for pictures.

Wanted: Mechanic in the Bangor area well versed in older equipment to work on a WWII era military Jeep. Contact: Jennifer Munson, Museum Director, Cole Land Museum, 207-990-3600 or email: jmunson@colemuseum.org

DIAMOND T EXTRA-HEAVY-DUTY MODELS 704 and 704H



Nominal Capacity 3-6 tons Maximum Gross Weight 25,000 lbs. (H Models 28-30,000)
Maximum Gross Combination Weights as Tractor 45,000-55,000 lbs.
Maximum Gross Ratings Six-Wheel Models 34-40,000 lbs.

Pine Tree Chapter of AHS Board of Directors (elected at the March 26, 2023 Annual Meeting)

President - Peter Mullin 6 Kinney Road, Gorham, Me 04038; (207) 838-5069; email: wfd44@maine.rr.com

Vice President - Tom Hudgins P.O. Box 43, Bradford, ME 04410; (207) 943-6548; email:
tomchristopher71@yahoo.com

Secretary - Nancy Mullin 6 Kinney Road, Gorham, Me 04038; (207) 671-6925; email: nancyjmullin@gmail.com

Treasurer - Cheryl Billings 1031 Pinkham Brook Rd. Durham, ME 04222; (207) 319-5167 (NOTE - PHONE
NUMBER CHANGE); email: cherylbillings55@gmail.com

Director - George Barrett 2 Country Charm Rd. Cumberland, ME; 04021; (207) 829-5134, cell (207) 671-2666; email:
sheepscot@gwi.net

Director - Howard Clouston 1361 Hammond St. Bangor, 04401; (207) 852-4424; email: howardclouston@aol.com

Director - Steve Corson 163 Main St., Rockport, ME 04856; cell (207) 542-4192; email: blackdogmack@gmail.com

Director - Jamie Mason 104 Falmouth Road, Falmouth, ME 04105; (207) 949-1360; email: haroldjmason@gmail.com

Director - Diane Munsey 785 River Road, Dresden, ME 04342; (207) 737-2997; email: munsandi@gmail.com

Director - Andy O'Brien 54 Upper Minot Road, Pownal, ME 04069; (207) 232-4743; email: aobrien211@gmail.com

Director - Bob Stackpole 446 River Road, Cushing, ME 04563; (207) 354-2372; email: stack123@roadrunner.com

Director Emeritus/Chapter Historian (appointed) - Lars Ohman 6 Antique Drive, Sabattus, ME 04280; cell (207)
376-7993; email: peckapohl@roadrunner.com

Pine Tree Chapter – ATHS
C/O Clayton Hoak
299 East Stage Road
Pittston, ME 04345

DUES NOTICE - Membership Renewal + Update Form

Please sign me up for another year's worth of membership in the Pine Tree Chapter, ATHS. Current membership in the American Truck Historical Society is required.

Name _____ *Date* _____

Street _____ *Phone:* () _____

City _____ *E-Mail* _____

State _____ *Zip* _____

Mail dues to:

Cheryl Billings, Treasurer
Pine Tree Chapter -ATHS
1031 Pinkham Brook Rd.
Durham, ME 04222

Pine Tree Chapter Dues of \$10.00 run from January to December.